



The Need For Every
Process Industry



DIGITAL VARIABLE AREA FLOWMETER

MODEL: SC / R - 300/D

The Variable Area Flowmeter is an instrument for measuring the flow of liquids and gases in pipelines.

It operates on the principle of Variable Area, the height of the float raised in the taper tube increasing the area of passage of fluid, which is transferred to the indicator by way of magnetic coupling

FLOW

DIGITAL VARIABLE AREA FLOWMETER

MODEL: SC / R - 300/D

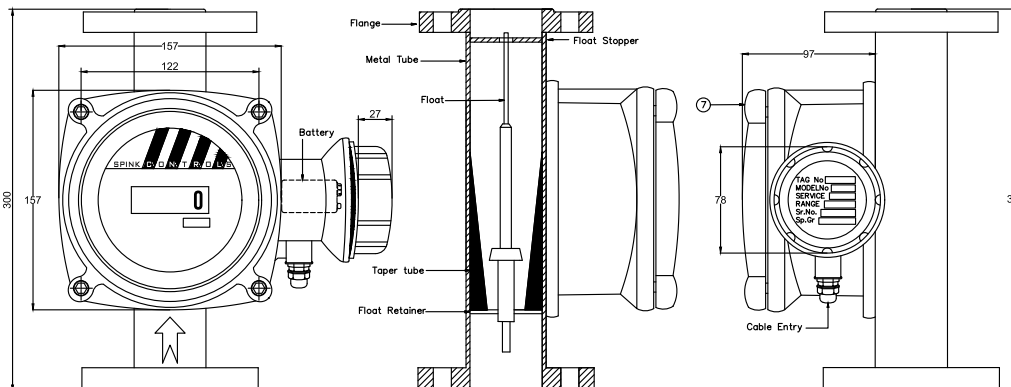
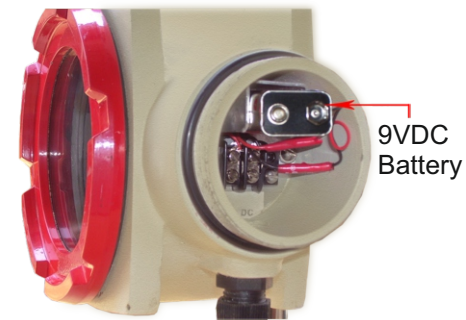
In Spink Controls' Digital variable Area flowmeter, the inner float magnetic field is detected by highly sensitive magnetic field detection sensor. It can operate from an external power source or an internal battery, and features an inbuilt transmitter that delivers a standard 4–20 mA output.

BENEFITS OF SPINK CONTROLS ROTAMETER

- No moving parts reducing the maintenance
- For extreme process conditions
 - High/low temperatures
 - High pressures
 - Aggressive products
- Limit switches, current output and Totalizer.

ENGINEERING SPECIFICATION

Rangeability	: 10 : 1
Accuracy	: +/-1.5% of Full Flow for Digital Indication
Repeatability	: 0.5% of Full Flow
Pressure Rating	: 80 Kg/cm ² , 250 Bar (Optional)
Allowable Fluid Temp.	: -20° To 150° C for Digital Indication
Connection	: Flanged, Threaded, Sanitary Fitting
Material Of Construction:	SS316, SS316L, SS304 & other on request (Alloy 625 / Hastelloy / Monel)
Indicator Box	: Die-cast Aluminum IP-68 and Ex d IIB T4 IP- 67, SS304, SS316
Accessories	: •Magnetic Filter, if the medium contains particles which can be magnetically influenced •Float damping, for Gas application where the Pressure is fluctuating
Optional certification	: PESO, IIC certification can be provided



FLOW RANGE AND PRESSURE LOSS

Line size NB		Flow Segment	Water (LPH)		Air (m ³ /hr) 0° C & 1 atm	Pressure Loss mm of WC
Flange connection	Tri clover TC		Material SS 304/316/316L	Material PTFE		
20 NB (¾")	1" (OD : 50.5 mm)	1A	5 – 50	3.3 – 33	0.15 – 1.5	650
		1B	10 – 100	6.5 – 65	0.3 – 3	
		1C	20 – 200	13 – 130	0.6 – 6	
		1D	30 – 300	20 – 200	0.9 – 9	
		1E	40 – 400	26 – 260	1.2 – 12	
		1F	50 – 500	32.5 – 325	1.5 – 15	
		1G	60 – 600	40 – 400	1.8 – 18	
25 mm 1"	2" (OD : 64.0 mm)	2A	80 – 800	52 – 520	2.4 – 24	790
		2B	100 – 1000	65 – 650	3 – 30	950
		2C	120 – 1200	78 – 780	3.6 – 36	
		2D	160 – 1600	104 – 1040	4.8 – 48	1050
		2E	200 – 2000	130 – 1300	6 – 60	
		2F	250 – 2500	143 – 1430	7.5 – 75	
		2G	300 – 3000	195 – 1950	9 – 90	
2H	350 – 3500	227 – 2275	10.5 – 105			
40 NB (1 ½")	2 ½" (OD : 77.5 mm)	2I	400 – 4000	260 – 2600	12 – 120	1100
		3A	500 – 5000	325 – 3250	15 – 150	
		3B	600 – 6000	390 – 3900	18 – 180	
50 NB (2")	3" (OD : 91 mm)	3C	750 – 7500	490 – 4900	22.5 – 225	980
		3D	1000 – 10000	650 – 6500	30 – 300	
80 NB (3")	4" (OD : 119 mm)	4A	1500 – 15000	900 – 9000	45 – 450	1000
		4B	2000 – 20000	1300 – 13000	60 – 600	
		5A	2500 – 25000	1600 – 16000	75 – 750	
100 NB (4")	6" (OD : 166.1 mm)	5B	3000 – 30000	1900 – 19000	90 – 900	1200
		5C	4000 – 40000	2600 – 26000	120 – 1200	
		6A	5000 – 50000	3200 – 32000	150 – 1500	
125 NB (5")	NO TC	6B	6000 – 60000	3900 – 39000	180 – 1800	1200
		6C	8000 – 80000	5200 – 52000	240 – 2400	
150 NB (6")	NO TC	7A	10000 – 100000	6500 – 65000	300 – 3000	1200
		7B	12000 – 120000	7800 – 78000	360 – 3600	
150 NB (6")	NO TC	8A	15000 – 150000	9700 – 97000	450 – 4500	

MODEL SELECTION

Suffix Code	1	2	3	4	5	6	7	8	9	10	Description
Model	SC/R- 300/D										Digital Indication
Variants for Digital Indication	1										Digital Display with loop powered 4 – 20 mA output
	2										Totalizer with loop powered transmitter
	3										Totalizer & Batch controller – 230 VAC
	4										High and Low Switch
	5										Totalizer and Density correction Facility
Flow Range		XX									Refer the Flow Range Chart
Fluid		L									Liquid
		G									Gas
Material Wetted Parts				S4							Body & Float SS 304
				S6							Body & Float SS 316
				ST							Body & Float PTFE Lined
				SL							Body & Float SS 316L
				XX							Other on Request
Connection				F							Flanged ANSI /BS/DIN
				S							Screwed NPT/BSP (M/F)
				T							Tri-Clamp
Flange to flange							1				300 mm
							2				250 mm
							3				400 mm
							4				500 mm
Enclosure							EX				Die-cast Aluminum Ex d IIB T4 IP 67
							WP				Die-cast Aluminum IP 68 (Non - battery)
Remote Indication								RM			Required (above 150 Deg. C)
								RX			Not Required
Accessories									J		Steam Jacketing



Head Office

303, SIDDHARTH TOWER, G.P. PAI ROAD, KOPRI, THANE (E) - 400603 MAHARASHTRA, INDIA
 Phone : +91 22 2532 8223
 +91 22 2532 8224
 Email : info@spinkcontrolsindia.com

Plant 1

GALA No. F-4 A WING, UDYOG BHAVAN-2 ADDITIONAL AMBERNATH, INDUSTRIAL AREA, ANAND NAGAR MIDC AMBERNATH, THANE 421501
 Phone : +91 9594991196
 Email : rupa.thakkar@spinkcontrols.com

Plant 2

PLOT No.: MS 114/115, AMBERNATH INDUSTRIAL AREA, CHIKHLOLI MIDC, AMBERNATH (W) THANE 421501
 Phone : +91 7400159593
 Email : avanti.rangdal@spinkcontrols.com

